



JUICES, NECTARS, DRINKS
SYSTEM SOLUTIONS FOR HORECA



COMPANY



Belfood is a young, Polish family company with wide experience in the food industry. Our mission is to create innovative food products, which meet the expectations of a modern consumer. Transparency, partnership and trust – the motto of each of our activities.

PRODUCTS



Professional system solutions for HORECA

The system offer ensures access to the best quality products: concentrates (Premix, Postmix), a large selection of equipment support (from simple jugs to advanced equipment POSTMIX), training and service. These three inseparable elements are the pillars of the PURENA brand.

Estimate your business and needs, so we can offer the best, proven solutions to you!

EFFICIENCY



COSTS



OUR ACHIEVEMENTS



FIRST PRIZE at GASTROFOOD Crakow 2015



COMMENDATION at EUROGASTRO Warsaw 2015



COMMENDATION at EUROGASTRO Warsaw 2016



GOLD MEDAL of POLAGRA - GASTRO Poznań 2016



COMMENDATION at EUROGASTRO Warsaw 2019



JUICE, NECTAR, DRINK DEFINITIONS



There are many different products on the market that contain juice. A transparent classification is important to distinguish individual products, e.g. juices from drinks.

1 JUICE

Made solely from fruits or vegetables, 100% e.g. from fruits and vegetables content. Can be made from concentrated juices (concentrates) or pressed directly (NFC: *not from concentrate*).

ALLOWED: adding fruit flesh and purée, enriching with the vitamins and mineral salts.

BANNED: adding colorants, sweeteners, preservatives, adding any sugars.

THERE ARE NO JUICES:

- WITH ADDED SUGAR
- WITH AN ADDITION OF PRESERVATIVES
- WITH LESS THAN 100% FRUITS

2 NECTAR

Contains from 25 to <100% juice or fruit purée. Made by adding water and sugar and/or honey and occasionally citric acid to fruit juice/purée.

ALLOWED: adding sweeteners to "light" nectars.

BANNED: adding colorants, preservatives.

3 DRINK

Contains juice or fruit/vegetable puree 20% or less.

ALLOWED: chemically preserved, using colorants, artificial aromas, sweeteners, thickeners and other components, which aromatise and add flavour, but can be also used to enhance the drink.

If we add a prohibited ingredient such as preservative to the product even with a high content of juice, then such a product can be called only a beverage.

PASTEURIZATION

One of the oldest and widespread methods of food preservation is pasteurization, i.e. high temperature impact (about 90°C). Our mothers and grandmothers know how to use it while preparing home-made jams, compotes and other preserves. During the pasteurization, bacteria and other microbes unfavorable to human health are destroyed, preserving taste and nutritional values. With the advance of the civilization, man discovered preservatives such as sodium benzoate or potassium sorbate.

We respect civilization achievements but we trust in nature – that's why we do not use preservatives in our products. Our products are pasteurized and packed in aseptic (clean) technology.



THREE METHODS OF SERVING JUICES IN GASTRONOMY

1 READY TO DRINK NFC – DIRECTLY PRESSED JUICE (NOT FROM CONCENTRATE)

Juices are served directly from cooling beverage dispenser (or pitchers or carafes) to guest's glass.



2 PREMIX

Products are offered as a concentrate which should be manually diluted with water in appropriate proportions, then poured into the pitchers, carafes or cooling appliances (breakfast dispensers).



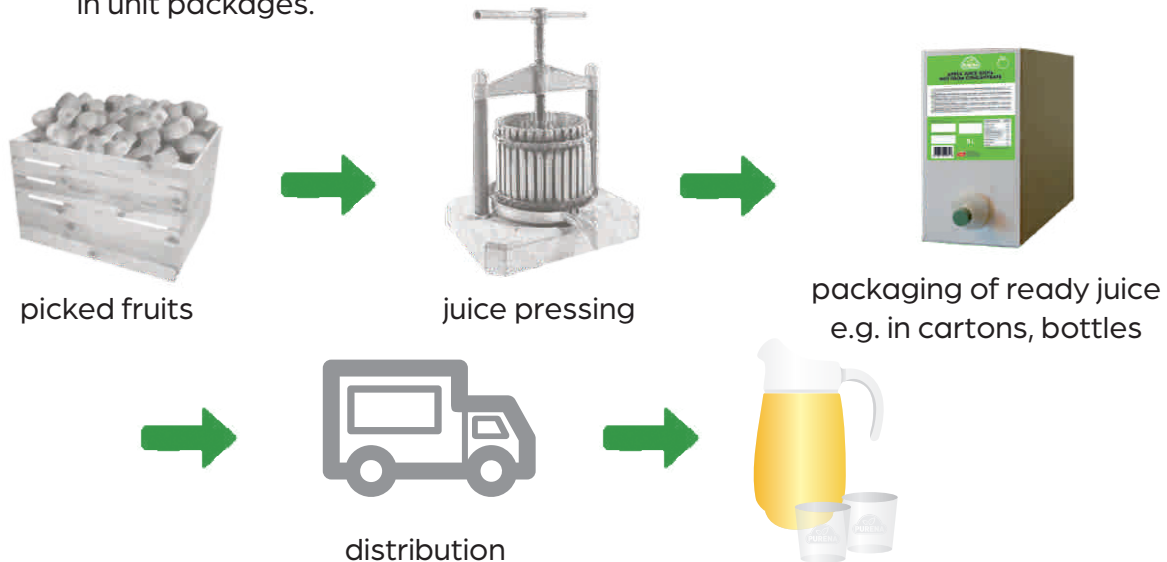
3 POSTMIX

Concentrates are diluted in right proportion automatically by continuous mixing, flowing right into customer's glass.



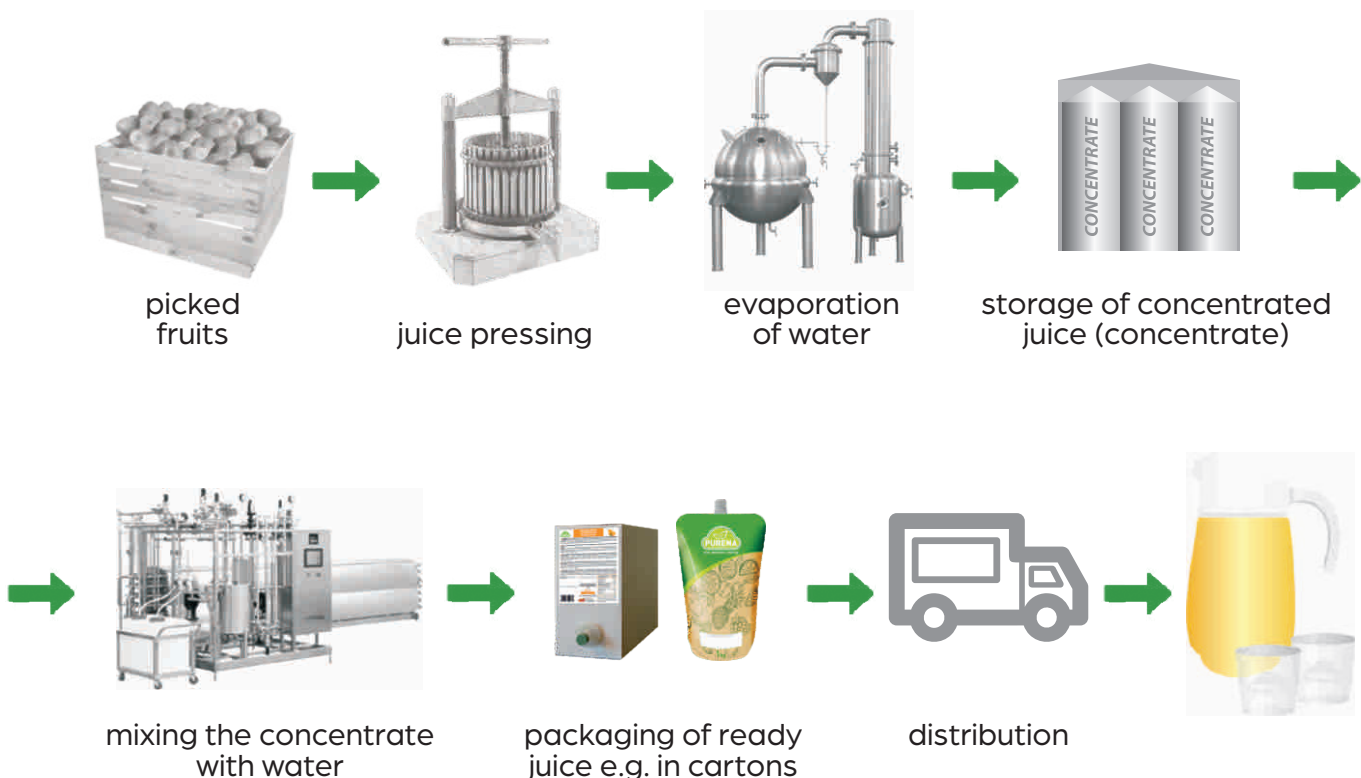
1 JUICES DIRECTLY PRESSED – THE BAG IN BOX PACKAGING

"not from concentrate" NFC: pressed, pasteurized (or not) and packed in unit packages.



2 JUICES FROM CONCENTRATES FOR HORECA

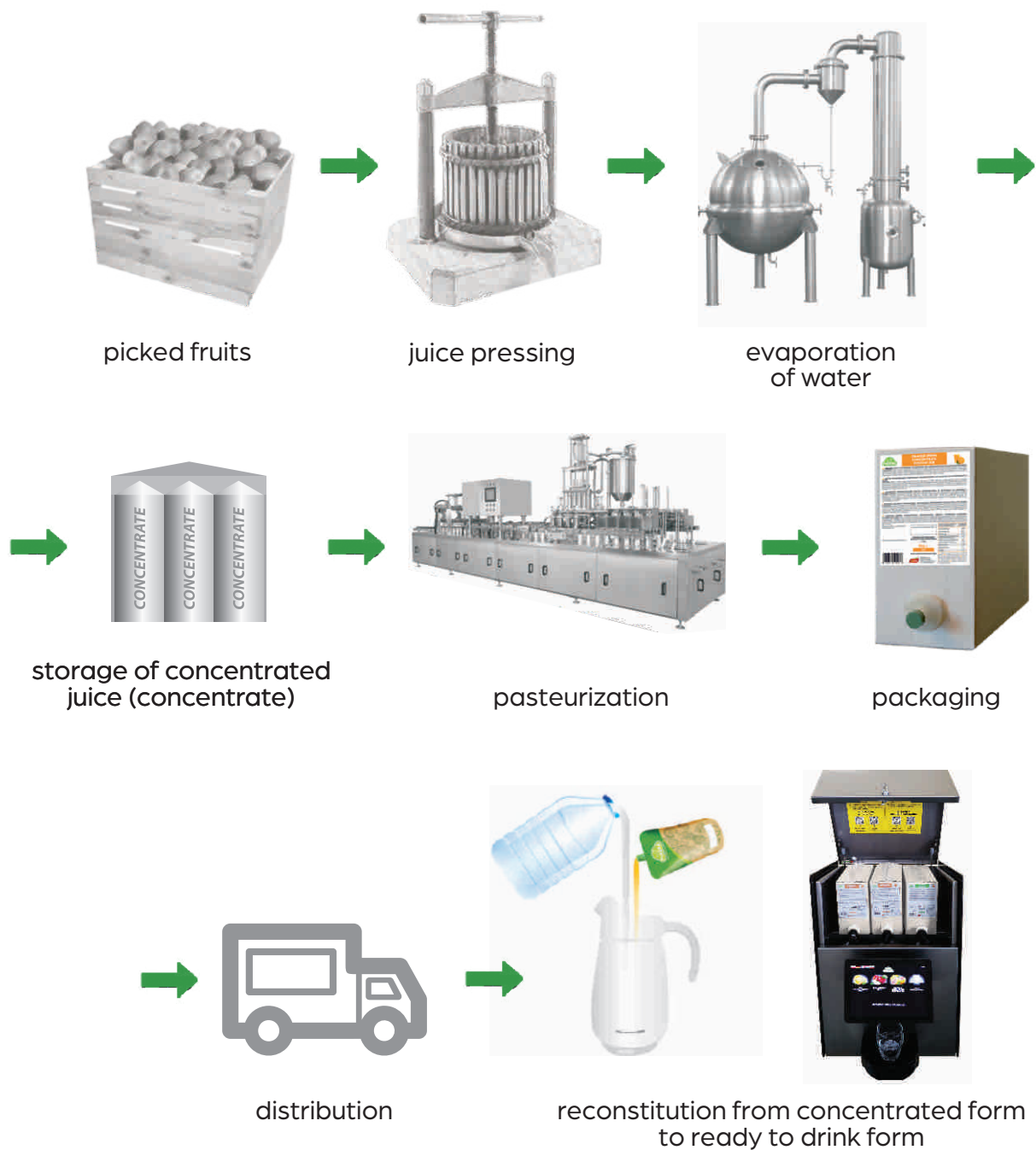
fruits pressed, concentrated by evaporation of water to concentrate juice and then after transfer to the factory/country of consumption, reconstituted with water to the original form (with the same amount of water as it was originally evaporated), pasteurized and packed in the unit packaging.



3

**JUICES FROM CONCENTRATES – PURENA
IN A FORM THAT CAN BE RECONSTITUTED**

fruits pressed to juice form, then concentrated by evaporation of water to concentrated juice form. Products are packed in unit packages, pasteurized and then distributed to consumer who reconstitute them with water to the original form (with the same amount of water as it was originally evaporated). Reconstitution takes place directly in a hotel, cafeteria or restaurant.



UNIT PACKAGES



PREMIX



**SINGLE
SACHET 1 kg**



**SELLING UNIT
BOX 3 x 1 kg**



**SELLING UNIT
BOX 6 x 1 kg**

POSTMIX: CONCENTRATES AND NFC



**SINGLE
SACHET 2,5 kg**



**SELLING UNIT
BOX 4 x 2,5 kg**



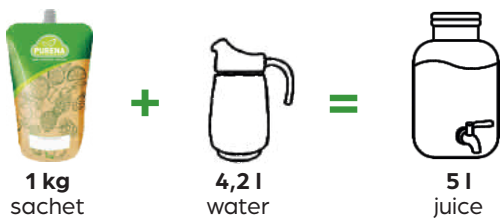
**POSTMIX
CONCENTRATE
6 kg**



NFC JUICE 5 l

PREMIX 1=5

JUICES 100%



Ingredients:
apple juice concentrate. Pasteurized.
EAN 6 x 1 kg netto
5 903111067045
nr INDEX 067045

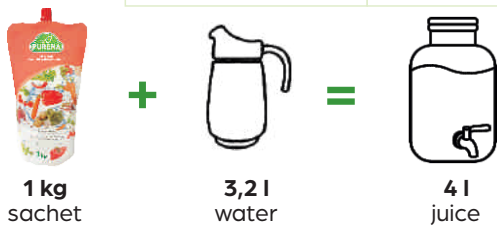


Ingredients:
orange juice concentrate. Pasteurized.
EAN 6 x 1 kg netto
5 903111067021
nr INDEX 067021

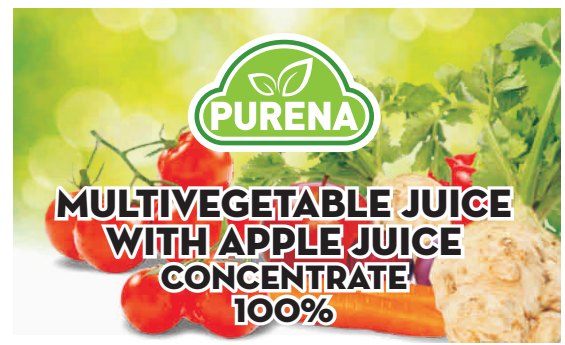


Ingredients:
orange juice concentrate, orange cells (7%).
Pasteurized.
EAN 6 x 1 kg netto
5 903111067243
nr INDEX 067243

Sales unit	The number of layers on the pallet	The number of packages on a layer	The number of packages on the pallet	Product netto weight - sum
1 box (6 kg)	5	24	120	720



Ingredients:
juices from juice concentrates: beetroot juice (98%), lemon juice (2,1%); **celery puree** (1,4%), sea salt, pepper, marjoram. Pasteurized.
EAN 3 x 1 kg netto
5 906746006182
nr INDEX 006182



Ingredients:
juices from juice concentrates: tomato juice (61,46%), carrot juice (19,21%), apple juice (13,72%), beetroot juice (2,28%); purees from: red pepper (2,44%), **celery** (1,95%), sea salt, pepper. Pasteurized.
EAN 3 x 1 kg netto
5 906746006175
no INDEX 006175

Sales unit	The number of layers on the pallet	The number of packages on a layer	The number of packages on the pallet	Product netto weight - sum
1 box (3 kg)	5	36	180	540

PREMIX JUICES 100%


Sok z ok. 35 cytryn w saszce!

ON MORNING LEMON MORNING LEMON MORNING MORNING LEMON POWER LEMON MORNING
SOK 100% Z CYTRYN SKONCENTROWANY



STOSUJ ROZCIEŃCZONE JAKO DODATEK DO:



LEMON MORNING LEMON POWER LEMON MORNING

Ingredients:
lemon juice concentrate.
Pasteurized.

EAN 1 x 180 ml netto
5 904358599599
nr INDEX 99599





GINGER MORNING GINGER MORNING GINGER MORNING GINGER MORNING GINGER POWER GINGER MORNING
100% SOK IMBIR CYTRYNA



STOSUJ ROZCIEŃCZONE JAKO DODATEK DO:



GINGER MORNING GINGER POWER GINGER MORNING

Ingredients:
directly pressed ginger juice (85%), lemon juice concentrate (15%).
Pasteurized.

EAN 1 x 180 ml netto
5 904358599566
nr INDEX 99566



PREMIX 1=5 NECTARS 50%

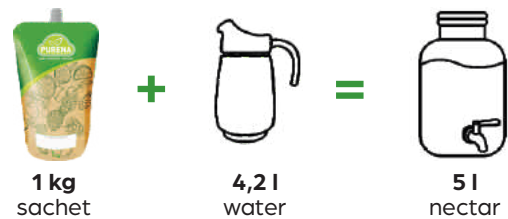


**MULTIFRUIT
NECTAR
50% JUICE
CONCENTRATE**



Ingredients:
fruit juices concentrate and puree (50% juice)
from: apples, oranges, apricots, pineapples,
bananas, passion fruits, mandarines, mangos,
limes, guavas; sugar, water, acidity regulator:
citric acid; antioxidant: ascorbic acid.
Pasteurized.

EAN 6 x 1 kg netto
5 903111067212
nr INDEX 067212

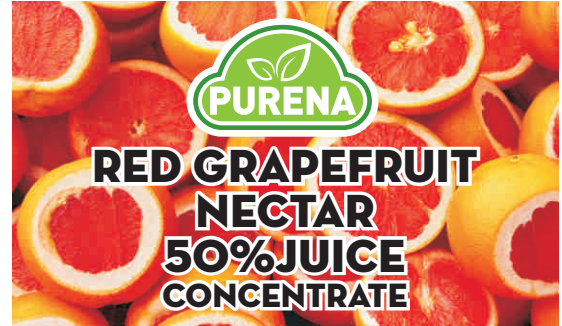




Ingredients:

orange juice concentrate, water, sugar,
natural orange flavouring, antioxidant:
ascorbic acid.
Pasteurized.

EAN 6 x 1 kg netto
5 903111067519
nr INDEX 067519



Ingredients:

red grapefruit juice concentrate, water, sugar,
natural grapefruit flavouring.
Pasteurized.

EAN 6 x 1 kg netto
5 903111067205
nr INDEX 067205

Sales unit	The number of layers on the pallet	The number of packages on a layer	The number of packages on the pallet	Product netto weight - sum
1 box (6 kg)	5	24	120	720



1 kg
sachet

+



5,2 l
water

=



6 l
drink

PREMIX 1=6
JUICE DRINKS



Fruit content in concentrate: min. 39%.

Ingredients:

sugar, water, orange cells (9%), orange juice concentrate (5,7%), acidity regulators: citric acid, sodium citrate; antioxidant: ascorbic acid; natural orange flavouring, colour: beta carotene, curcumin; stabilizers: pectin, locust bean gum, gum arabic, glycerol esters of wood rosin.
Pasteurized.

EAN 6 x 1 kg netto
5 903111067069
nr INDEX 067069



Juice content in concentrate: min. 30%.

Ingredients:

sugar, water, orange juice concentrate (5,7%), acidity regulators: citric acid, sodium citrate; antioxidant: ascorbic acid; natural orange flavouring, colour: beta carotene, curcumin; stabilizers: pectin, locust bean gum, gum arabic, glycerol esters of wood rosin. Pasteurized.

EAN 6 x 1 kg netto
5 903111067427
nr INDEX 067427



Juice content in concentrate: min. 20%.

Ingredients:

sugar, water, apple juice concentrate (3,5%), acidity regulator: citric acid; flavouring, colour: ammonia-sulphite caramel; antioxidant: ascorbic acid. Pasteurized.

EAN 6 x 1 kg netto
5 903111067465
nr INDEX 067465



Juice content in concentrate: min. 20%.

Ingredients:

sugar, water, apple juice concentrate (3,5%), acidity regulator: citric acid; mint extract (0,26%), flavouring, colour: ammonia-sulphite caramel; natural mint flavouring. Pasteurized.

EAN 6 x 1 kg netto
5 903111067175
nr INDEX 067175



Juice content in concentrate: min. 45%.

Ingredients:

sugar, water, blackcurrant juice concentrate (6%), aronia juice concentrate (2,5%), acidity regulator: citric acid; black carrot juice concentrate, flavouring, antioxidant: ascorbic acid. Pasteurized.

EAN 6 x 1 kg netto
5 903111067113
nr INDEX 067113



Juice content in concentrate: min. 30%.

Ingredients:

sugar, water, cherry juice concentrate (3,1%), apple juice concentrate (3%), acidity regulator: citric acid; black carrot juice concentrate, flavouring, antioxidant: ascorbic acid. Pasteurized.

EAN 6 x 1 kg netto
5 903111067229
nr INDEX 067229



Juice and puree content in concentrate: min. 67%.

Ingredients:

sugar, water, strawberry puree (9%), apple juice concentrate (4%), strawberry juice concentrate (2,5%), cherry juice concentrate (1,5%), acidity regulator: citric acid; aronia juice concentrate (0,7%), flavouring, antioxidant: ascorbic acid. Pasteurized.

EAN 6 x 1 kg netto
5 903111067854
nr INDEX 067854



Juice and puree content in concentrate: 120%.

Ingredients:

sugar, water, apple juice concentrate (7,7%), plum juice concentrate (5,4%), dried plum juice concentrate (5%), apple puree concentrate (3%), acidity regulator: citric acid; pear juice concentrate (0,5%), cinnamon extract (0,45%), flavouring, natural flavouring, colour: ammonia sulphite caramel. Pasteurized.

EAN 6 x 1 kg netto
5 903111067847
 nr INDEX 067847



Juice and puree content in concentrate: min. 45%.

Ingredients:

sugar, water, orange juice concentrate (4%), orange and lemon cells (3,2%), lemon juice concentrate (3%), acidity regulator: citric acid; lemon puree (1,35%), natural flavourings, antioxidant: ascorbic acid. Pasteurized.

EAN 6 x 1 kg netto
5 903111067809
 nr INDEX 067809



Juice and puree content in concentrate: min. 47%.

Ingredients:

sugar, water, red rhubarb puree (10,5%), apple juice concentrate (3%), lemon juice concentrate (1,6%), orange juice concentrate (1,1%), acidity regulator: citric acid; lemon puree and lemon cells (0,82%), natural flavourings, aronia juice concentrate (0,25%), antioxidant: ascorbic acid. Pasteurized.

EAN 6 x 1 kg netto
5 903111067830
 nr INDEX 067830



Juice content in concentrate: min. 28%.

Ingredients:

sugar, water, ginger juice (20%), lemon juice concentrate (8%), natural honey (5%), antioxidant: ascorbic acid. Pasteurized.

EAN 6 x 1 kg netto
5 903111067946
 nr INDEX 067946



Juice and puree content in concentrate: 62%.

Ingredients:

sugar, water, lime juice concentrate (5,5%), lemon cells and puree (3,2%), lemon juice concentrate (2,2%), orange juice concentrate (1,55%), acidity regulator: citric acid; orange cells (1%), natural flavouring, antioxidant: ascorbic acid. Pasteurized.

EAN 6 x 1 kg netto
5 906746006991
 nr INDEX 006991



Juice and puree content in concentrate: 124%.

Ingredients:

sugar, water, raspberry puree concentrate (15%), apple juice concentrate (6,5%), raspberry juice concentrate (2,7%), lemon juice concentrate (2%), acidity regulator: citric acid; raspberry seeds, flavouring, mint extract (0,06%). Pasteurized.

EAN 6 x 1 kg netto
5 906746006243
 nr INDEX 006243



Juice and puree content in concentrate: 92,3%.

Ingredients:

sugar, mango puree concentrate (28%), water, lemon juice concentrate (5,5%), flavouring. Pasteurized.

EAN 6 x 1 kg netto
5 906746006052
 nr INDEX 006052



Juice and puree content in concentrate: 68,3%.

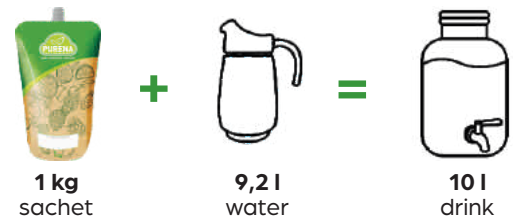
Ingredients:

sugar, water, lemon juice concentrate (8,7%), lemon puree (4,3%), lemon cells (4%), natural flavourings, antioxidant: ascorbic acid. Pasteurized.

EAN 6 x 1 kg netto
5 904358599726
 nr INDEX 599726

Sales unit	The number of layers on the pallet	The number of packages on a layer	The number of packages on the pallet	Product netto weight - sum
1 box (6 kg)	5	24	120	720

**PREMIX 1=10
DRINKS WITHOUT
ADDED SUGAR**



Juice and puree content in concentrate: 453%.

It contains sugar naturally derived from fruits.

Ingredients:

apple juice concentrate (61%), water, blackberry puree (10%), aronia juice concentrate (8,5%), strawberry juice concentrate (1,5%), lemon juice concentrate (1,2%), blueberry puree (1%), natural flavouring. Pasteurized.

EAN 6 x 1 kg netto
5 906746006168
 nr INDEX 006168

Sales unit	The number of layers on the pallet	The number of packages on a layer	The number of packages on the pallet	Product netto weight - sum
1 box (6 kg)	5	24	120	720



1 kg sachet

+



8,2 l water

=



9 l drink

PREMIX 1=9 FRUIT DRINKS



Juice content in concentrate: 6,9%.

Ingredients:

sugar, water, black tea extract (1,4%), lemon juice concentrate (1%), acidity regulator: citric acid; natural flavouring, antioxidant: ascorbic acid. Pasteurized.

EAN 6 x 1 kg netto
5 903111067236
nr INDEX 067236

Sales unit	The number of layers on the pallet	The number of packages on a layer	The number of packages on the pallet	Product netto weight - sum
1 box (6 kg)	5	24	120	720



1 kg sachet

Ready for direct consumption!

Perfect for smoothies, cocktails, shakes, desserts and ice creams. It contains sugar naturally derived from fruits.

FRUIT PUREES NO SUGAR ADDED



Mango puree with concentrated mango puree, pasteurized.

Ingredients:

Mango puree, concentrated mango puree, vitamin C.

EAN 3 x 1 kg netto
5 906746006151
nr INDEX 006151



Apple puree, concentrated, pasteurized.

Ingredients:

concentrated apple puree, vitamin C.

EAN 3 x 1 kg netto
5 906746006113
nr INDEX 006113



Banana puree, pasteurized.

Ingredients:

banana puree, vitamin C.

EAN 3 x 1 kg netto
5 906746006120
nr INDEX 006120



Peach puree, concentrated, pasteurized.

Ingredients:
concentrated peach puree, vitamin C.

EAN 3 x 1 kg netto
5 906746006137
nr INDEX 006137



Blackcurrant puree, pasteurized.

Ingredients:
blackcurrant puree.

EAN 3 x 1 kg netto
5 906746006564
nr INDEX 006564



Strawberry puree with concentrated strawberry puree and apple juice concentrate, pasteurized.

Ingredients:
strawberry purees 90% (strawberry puree 60%, concentrated strawberry puree 30%), apple juice concentrate (8,4%), black carrot juice concentrate, vitamin C.

EAN 3 x 1 kg netto
5 906746006519
nr INDEX 006519



Passion fruit puree, pasteurized.

Ingredients:
Passion fruit puree.

EAN 3 x 1 kg netto
5 903585989775
nr INDEX 989775

VEGETABLE PUREE



Tomato paste, pasteurized.

Ingredients:
tomato paste.

EAN 3 x 1 kg netto
5 904358599412
nr INDEX 599412



Sales unit	The number of layers on the pallet	The number of packages on a layer	The number of packages on the pallet	Product netto weight - sum
1 box (3 kg)	5	36	180	540

PREMIX EQUIPMENT

1 INFORMATION TAG



Nr Index 077 306

2 MINI CHALKBOARD STAND



Nr Index 077 304

3 GLASS JAR WITH UNBREAKABLE STAINLESS STEEL TAP, 11 l



Nr Index 070 011

4 GLASS JAR WITH UNBREAKABLE STAINLESS STEEL TAP, 8 l



Nr Index 070 010

5 WOOD JAR BASE Ø 20 cm



Wooden base for the jar 8l.
1 unit per box.

Nr Index 073 001

6 MEASURING CUP, 5 l



Practical 5–6 litres measuring cup for diluting, made of PP flexible material.

Nr Index 070 003

7 GLASS JUG, 2 l



Glass pitcher, engraved.
Volume: 2 litres.
Liquids level scale, dishwasher safe.
6 pitchers per box.

Nr Index 070 005

8 BREAKFAST DISPENSER, 12 l



Breakfast dispenser.
Volume 12 l.
Made from stainless steel and polycarbonate.
Option of cooling by special central mandrel to pre-freeze and bottom ice container.

Nr Index 070 006

PREMIX EQUIPMENT

9

DISPENSER LEMO M10 SS 10 LITRES



Automatic cooling dispenser.
Volume: 10 litres. Marked level scale.
Easy disassembly of bowl.
Mixing pallets system. Reliable, durable and tested appliance. Water level indicator incorporated into the drip tray serves to indicate the time to empty the tray. Ultra fast cooling. Adjustable thermostat. Used materials: stainless steel, ABS plastic and polycarbonate.
Weight: 16,5 kg.
Dimensions: 25x39x70 cm.
Guarantee: 12 months.
Supply voltage: 230 V.
Nr Index 070 018

10

DISPENSER LEMO BLACK 2x10 LITRES



Automatic cooling dispenser.
Volume: 2x10 litres. Marked level scale.
Easy disassembly of bowl.
Mixing pallets system. Reliable, durable and tested appliance. Water level indicator incorporated into the drip tray serves to indicate the time to empty the tray. Ultra fast cooling. Adjustable thermostat. Used materials: stainless steel, ABS plastic and polycarbonate.
Weight: 23 kg.
Dimensions: 50x39x70 cm.
Guarantee: 12 months.
Supply voltage: 230 V.
Nr Index 070 019

11

NFC DISPENSER



Automatic cooling dispenser.
Volume: 2x10 litres OR 2x5 litres.
Nr Index 070 101

All these elements and devices are approved for contact with food in accordance with the requirements of the law and have certification in the European Union.



2,5 kg
sachet

POSTMIX 1=5 JUICE CONCENTRATES 100%



Ingredients:
orange juice concentrate.
Pasteurized.

EAN 4 x 2,5 kg netto
5 903111067694
nr INDEX 067694



Ingredients:
apple juice concentrate.
Pasteurized.

EAN 4 x 2,5 kg netto
5 903111067687
nr INDEX 067687

Sales unit	The number of layers on the pallet	The number of packages on a layer	The number of packages on the pallet	Product netto weight - sum
1 box (10 kg)	4	16	64	640



2,5 kg
sachet

POSTMIX 1=5 NECTARS CONCENTRATES 50% AND 25%



Ingredients:
sugar, water, blackcurrant juice concentrate, redcurrant juice concentrate, natural flavouring.
Pasteurized.

EAN 4 x 2,5 kg netto
5 903585990054
nr INDEX 990054



Ingredients:
orange juice concentrate, water, sugar, natural orange flavouring, antioxidant: ascorbic acid.
Pasteurized.

EAN 4 x 2,5 kg netto
5 903111067724
nr INDEX 067724



Ingredients:
red grapefruit juice concentrate, water, sugar, natural grapefruit flavouring. Pasteurized.

EAN 4 x 2,5 kg netto
5 906746006083
nr INDEX 006083



Ingredients:
fruit juices concentrate and puree (50% of juice) from: apple, orange, apricot, pineapple, banana, passion fruit, mandarin, mango, lime, guava; sugar, water, acidity regulator: citric acid; antioxidant: ascorbic acid. Pasteurized.

EAN 4 x 2,5 kg netto
5 906746006571
nr INDEX 006571

Sales unit	The number of layers on the pallet	The number of packages on a layer	The number of packages on the pallet	Product netto weight - sum
1 box (10 kg)	4	16	64	640

DRINKS CONCENTRATES



2,5 kg
sachet

Juice content in concentrate: min. 187%.

Reconstitution ratio 1=10.

Ingredients:

water, sugar, apple juice concentrate (30%), acidity regulator: citric acid; flavouring, sweeteners: sodium cyclamate, sucralose, acesulfame K; colour: ammonia-sulphite caramel. Pasteurized. It contains sugar and sweeteners.

EAN 4 x 2,5 kg netto
5 903111067786
nr INDEX 067786

Juice content in concentrate: min. 139%.

Reconstitution ratio 1=10.

Ingredients:

water, sugar, orange juice concentrate (24%), acidity regulators: citric acid, sodium citrate; antioxidant: ascorbic acid, natural orange flavouring, sweeteners: sodium cyclamate, sucralose, acesulfame K; colours: beta carotene, curcumin; stabilizers: pectin, locust bean gum, gum arabic, glycerol esters of wood rosin. It contains sugar and sweeteners. Pasteurized.

EAN 4 x 2,5 kg netto
5 903111067793
nr INDEX 067793





Juice content in concentrate: min. 6,9%.

Reconstitution ratio 1=9.

Ingredients:

sugar, water, black tea extract (1,4%), lemon juice concentrate (1%), acidity regulator: citric acid; natural flavourings, antioxidant: ascorbic acid. Pasteurized.

EAN 4 x 2,5 kg netto
5 903111067755
 nr INDEX 067755



Juice content in concentrate: min. 24%.

Reconstitution ratio 1=15.

Ingredients:

sugar, water, acidity regulator: citric acid; flavouring, aronia juice concentrate (1,8%), apple juice concentrate (1,5%), black carrot juice concentrate, raspberry juice concentrate (0,7%), sweeteners: sodium cyclamate, sucralose, acesulfame K. Pasteurized. It contains sugar and sweeteners.

EAN 4 x 2,5 kg netto
5 906746006656
 nr INDEX 006656



Juice content in concentrate: min. 45%.

Reconstitution ratio 1=6.

Ingredients:

sugar, water, orange juice concentrate (4%), lemon juice concentrate (3%), acidity regulator: citric acid; lemon puree (1,35%), natural flavourings, antioxidant: ascorbic acid; lemon cells (0,25%). Pasteurized.

EAN 4 x 2,5 kg netto
5 903111067014
 nr INDEX 067014



Juice content in concentrate: min. 67%.

Reconstitution ratio 1=6.

Ingredients:

sugar, water, strawberry puree (9%), apple juice concentrate (4%), strawberry juice concentrate (2,5%), sour cherry juice concentrate (1,5%), acidity regulator: citric acid; aronia juice concentrate (0,7%), natural strawberry flavouring. Pasteurized.

EAN 4 x 2,5 kg netto
5 903111067052
 nr INDEX 067052

Sales unit	The number of layers on the pallet	The number of packages on a layer	The number of packages on the pallet	Product netto weight - sum
1 box (10 kg)	4	16	64	640

BAG IN BOX NFC 5 l NOT FROM CONCENTRATE



ORANGE JUICE 100% NOT FROM CONCENTRATE

Orange juice direct cold pressed.
Pasteurized.
Ingredients: orange juice NFC.

EAN 5l netto
5 904358599306
nr INDEX 599306



APPLE JUICE 100% NOT FROM CONCENTRATE

Apple juice direct cold pressed. Naturally
cloudy. Pasteurized.
Ingredients: apple juice NFC.

kod EAN 5l netto
5 904358599313
nr INDEX 599313

BAG IN BOX POSTMIX 6 kg



ORANGE JUICE 100%, CONCENTRATE POSTMIX BIB



100%

Orange juice 100% concentrate.
Pasteurized. Reconstitution ratio 1=5.
Ingredients: orange juice concentrate.

EAN 6 kg netto
5 904358599207
nr INDEX 599207

APPLE JUICE 100%, CONCENTRATE POSTMIX BIB



100%

Apple juice 100% concentrate.
Pasteurized. Reconstitution ratio 1=5.
Ingredients: apple juice concentrate.

EAN 6 kg netto
5 904358599214
nr INDEX 599214

MULTIFRUIT NECTAR 50%, CONCENTRATE POSTMIX BIB



50%

Multifruit nectar 50% concentrate.
Pasteurized. Reconstitution ratio 1=5.
Ingredients: fruit juices concentrate and
puree (50% juice) from: apples, oranges,
apricots, pineapples, bananas, passion fruits,
mandarines, mangos, limes, guavas; sugar,
water, acidity regulator: citric
acid, antioxidant: ascorbic acid.

EAN 6 kg netto
5 904358599245
nr INDEX 599245

RED GRAPEFRUIT NECTAR 50%, CONCENTRATE POSTMIX BIB



50%

Red grapefruit nectar 50% concentrate.
Pasteurized. Reconstitution ratio 1=5.
Ingredients: red grapefruit juice concentrate,
water, sugar, natural grapefruit flavouring.

EAN 6 kg netto
5 904358599238
nr INDEX 599238

ORANGE NECTAR 50%, CONCENTRATE POSTMIX BIB



50%

Orange nectar 50% concentrate.
Pasteurized. Reconstitution ratio 1=5.
Ingredients: orange juice concentrate, water,
sugar, natural orange flavouring, antioxidant:
ascorbic acid.

EAN 6 kg netto
5 904358599221
nr INDEX 599221

BLACKCURRANT NECTAR 25%, CONCENTRATE POSTMIX BIB



25%

Blackcurrant nectar 25% concentrate.
Pasteurized. Reconstitution ratio 1=5.
Ingredients: sugar, water, blackcurrant juice
concentrate, natural blackcurrant flavour.

kod EAN 6 kg netto
5 904358599252
nr INDEX 599252

LEMON-ORANGE LEMONADE, CONCENTRATE POSTMIX BIB



Lemon–orange drink concentrate.
Pasteurized. Reconstitution ratio 1=6.
Ingredients: sugar, water, orange juice concentrate (4%), lemon juice concentrate (3%), acidity regulator: citric acid; lemon puree (1,35%), natural flavourings, antioxidant: ascorbic acid; lemon cells (0,25%).

EAN 6 kg netto
5 904358599290
 nr INDEX 599290

STRAWBERRY-CHERRY DRINK, CONCENTRATE POSTMIX BIB



Strawberry–cherry fruit drink concentrate.
Pasteurized. Reconstitution ratio 1=6.
Ingredients: sugar, water, strawberry puree (9%), apple juice concentrate (4%), strawberry juice concentrate (2,5%), cherry juice concentrate (1,5%), acidity regulator: citric acid; aronia juice concentrate (0,7%), natural strawberry flavouring.

EAN 6 kg netto
5 904358599283
 nr INDEX 599283

APPLE DRINK, CONCENTRATE POSTMIX BIB



Apple drink concentrate.
Pasteurized. Reconstitution ratio 1=6.
Ingredients: sugar, water, apple juice concentrate (3,5%), acidity regulator: citric acid; flavouring, colour: ammonia–sulphite caramel.

EAN 6 kg netto
5 904358599269
 nr INDEX 599269

ORANGE DRINK, CONCENTRATE POSTMIX BIB



Orange drink concentrate.
Pasteurized. Reconstitution ratio 1=6.
Ingredients: sugar, water, orange juice concentrate (15,3%), orange puree (8%), acidity regulator: citric acid; natural flavourings, colours: beta carotene, curcumin; antioxidant: ascorbic acid.

EAN 6 kg netto
5 904358599276
 nr INDEX 599276

AUTOMATIC COOLING DISPENSERS



T	CONNECT VARIO 3+1	CONNECT VARIO TOWER 3+1	CONNECT STANDARD 3+1	CONNECT TOWER 3+1	PUREMIX ECO 2+1	3+1* COMPACT
1	18 kg	18 kg	7,5 kg	7,5 kg	5 kg	7,5 kg
2	min. 90 l	min. 90 l	min. 37,5 l	min. 37,5 l	min. 25 l	min. 37,5 l
3	800 portions	800 portions	250 portions	250 portions	155 portions	250 portions

1 breakfast portion = 160 ml

T - TYPE

1 - 1 batch of concentrate

2 - ready to drink product, depends on the concentrate type

3 - amounts of breakfast portions

* available also in versions: 2+1 and 2+2

POSTMIX EQUIPMENT

1

DISPENSER PUREMIX 3+1 CONNECT VARIO AND 3+1 CONNECT VARIO TOWER



CONNECT VARIO

- modern design – under-counter „Tower“ version – many body lining patterns, NEW! Wooden oak lamellas
- Online support and tutorial videos
- Intuitive to use – user-friendly interface, freely adjustable serving size
- 10" touch screen – for comfortable and hygienic use, easy-to-read icons, messages in 25 languages
- Easy and quick sachet insertion
- Efficiency – up to 800 servings (160 ml/serving) of juices and drinks depending on product type
- Remote diagnostics and troubleshooting as well as mobile servicing
- Environmentally friendly solution – up to 11 times lower plastic consumption due to the concentrated form of the products and Doypack bags
- Dimensions: width 462 mm, height 643 mm, depth 600 mm
- Water connection: pushfit 8 mm
- Weight – empty: 40 kg, loaded: +18 kg
- Power consumption 350 W
- Loading: 3x1kg, 3x2,5kg, 3x6kg

Own-produced device, protected by an industrial design patent – intellectual property on number 008856181-0001.



CONNECT VARIO TOWER

2

DISPENSER PUREMIX 3+1 CONNECT STANDARD AND 3+1 CONNECT STANDARD TOWER



CONNECT STANDARD

- modern design: Compact version, under-counter Tower version, many body lining patterns available
- Online support and tutorial videos
- Intuitive to use – user-friendly interface, freely adjustable serving size
- 7" touch screen – for comfortable and hygienic use, easy-to-read icons, messages in 25 languages
- Easy and quick sachet insertion
- Efficiency – up to 400 servings (160 ml/serving) of juices and drinks depending on product type
- Remote diagnostics and troubleshooting as well as mobile servicing
- Environmentally friendly solution – up to 11 times lower plastic consumption due to the concentrated form of the products and Doypack bags
- Dimensions: width 360 mm, height 530 mm, depth 560 mm
- Water connection: pushfit 8 mm
- Weight – empty: 32 kg, loaded: +7,5 kg
- Max power consumption 350 W
- Loading: 3 x 2,5 kg



CONNECT STANDARD TOWER

3

DISPENSER COMPACT 3+1



- 3 kinds of juices and cooled water, (available also in 2+1 and 2+2 versions)
- Mixing zone volume 3 x 2,5 kg sachets = 7,5 kg concentrate PURENA = 250 breakfast portions (160 ml) inside the appliance
- Super fast cooling thanks to use the dry cooling block system
- Dispensing 160 ml portion of product takes only 6 seconds
- LED backlight in the dispensing area
- Serving counter: daily, weekly
- Possibility of programming the size of the portion: Auto portion or dispensing in Manual mode (amount of drink programmed by length of holding the button)
- Compatibility with payment systems or access systems (for card or magnetic key, RFID reader: canteens, water parks). Communication with billing systems via slow-speed 0/1 input
- Informative LCD display
- Automatic selection of settings for the product
- Easy correction of the concentrate/water portions from the control panel for the waiter option
- Possibility to fill a jug or carafe with a key or a waiter's button
- Possibility of temporarily switching off juice/drink dispensing when the water dispensing function is active
- Dimensions: width 425 mm, height 435 mm, depth 460 mm, weight: 44 kg
- Power consumption: 250 W
- Water connection: w 3/4 hose or quick coupling 8 mm



scan QR code
and watch
our videos

SAVING COSTS



TRANSPORT, LOGISTICS AND STORAGE

1 carton 6 kg
Bag In Box POSTMIX



180 bottles per 200 ml juice 100%

**WE SAVE TIME, WE SAVE ENVIRONMENT
AND YOU SAVE YOUR MONEY!**

**YOUR SMALL CONTRIBUTION
TO ECOLOGY GIVES GREAT EFFECT!**



Concentrated juices and concentrated drinks are packed aseptically in multilayer foil DOYPACK sachets and Bag in Box 6 kg.



Pasteurization allows to maintain durability for 12 months from the date of production without storage in a refrigerator.



After reconstitution, the PREMIX juice should be consumed within 48 hours. POSTMIX sachets connected to the device should be used within 14 days.

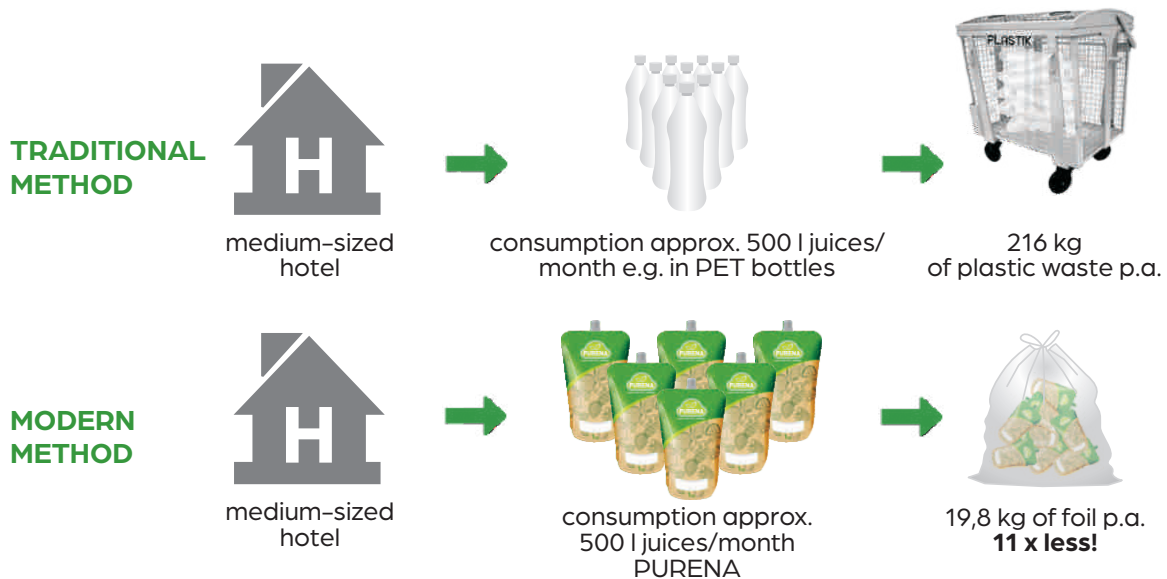


Open sachet should be used within 14 days, stored in a refrigerator.

SAVING COSTS



PURENA reduces the emission of packaging waste. It's the right choice for the environment, your clients and your pocket.



ECO PURENA

Thanks to our customers and
PURENA we saved **390 000 kg**
of plastic waste to environment.
Thank you!



16,5 g / 5 l
= 3,3 g for 1 liter of juice:
the lightest packaging in the market



SAMPLE





ARRANGEMENTS





BELFOOD Sp. z o.o.
Mielęckiego 10/3
40-013 KATOWICE, Polska
tel. +48 604 742 517
tel. +48 34 314 20 78
biuro@belfood.pl

BELFOOD Sp. z o.o.
OFFICE AND WAREHOUSE:
Złoty Potok, Mineralna 2
42-253 JANÓW

www.purena.uk

NIP: 954 274 42 27 | REGON: 243283018 | KRS 0000468066